



Healing Essence

Sample 170-070623-142

HE - Active (Capsule)

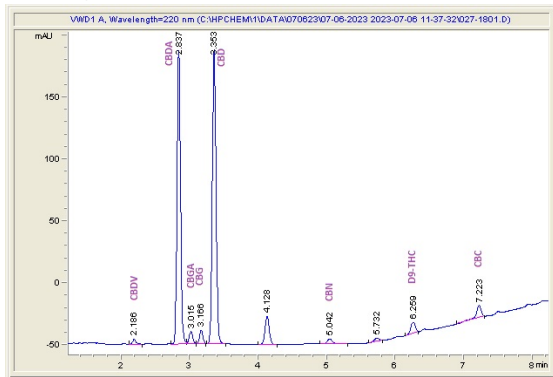
Sample Submitted: 07-06-2023; Report Date: 07-13-2023

Sample Density: 920 mg/ml; Sample Unit Size: 0.24 g

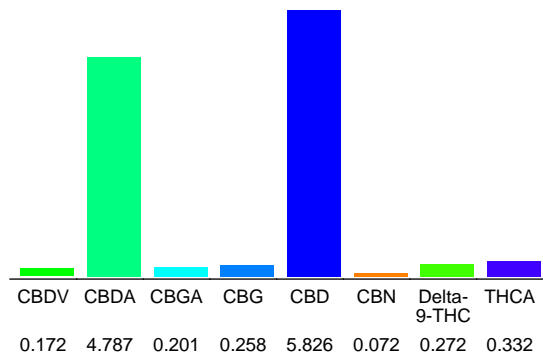
## HE - Active (Capsule)

Plant Material

### Chromatogram



### Cannabinoid Profile



### Cannabinoid Profile by HPLC

**0.27%**  
Delta-9-THC

**5.83%**  
CBD

**11.92%**  
Total Cannabinoids

Cannabinoid	% wt	mg/ml	mg/unit
CBDV	0.172	1.582	0.4145
CBDA	4.787	44.04	11.54
CBGA	0.201	1.849	0.4844
CBG	0.258	2.374	0.6218
CBD	5.826	53.6	14.04
CBN	0.072	0.6624	0.1735
Delta-9-THC	0.272	2.502	0.6555
THCA	0.332	3.054	0.8001
<b>Total Cannabinoids</b>	<b>11.92</b>	<b>109.7</b>	<b>28.7</b>
<b>Calculated Total THC</b>	<b>0.56</b>	<b>5.18</b>	<b>1.36</b>
<b>Calculated CBD Yield</b>	<b>10.02</b>	<b>92.22</b>	<b>24.16</b>

Calculated Total THC = Delta-9-THC + 0.877 \* THCA  
Calculated Maximum CBD Yield = CBD + 0.877 \* CBDA

**Marin Analytics, LLC**  
250 Bel Marin Keys Blvd, Suite D4  
Novato, CA 94949  
833-321-TEST / info@marinanalytics.com

*Sara Biancalana*  
**Sara Biancalana**  
Chief Scientist

This sample has been tested by Marin Analytics, LLC using valid testing methodologies and a quality system. Values reported relate only to the sample tested. Marin Analytics, LLC makes no claims as to the efficacy, safety, or other risks associated with any detected or non-detected levels of any compounds reported herein. This Certificate shall not be reproduced except in full without the written approval of Marin Analytics, LLC. Copyright 2023 Marin Analytics, LLC All Rights Reserved.